

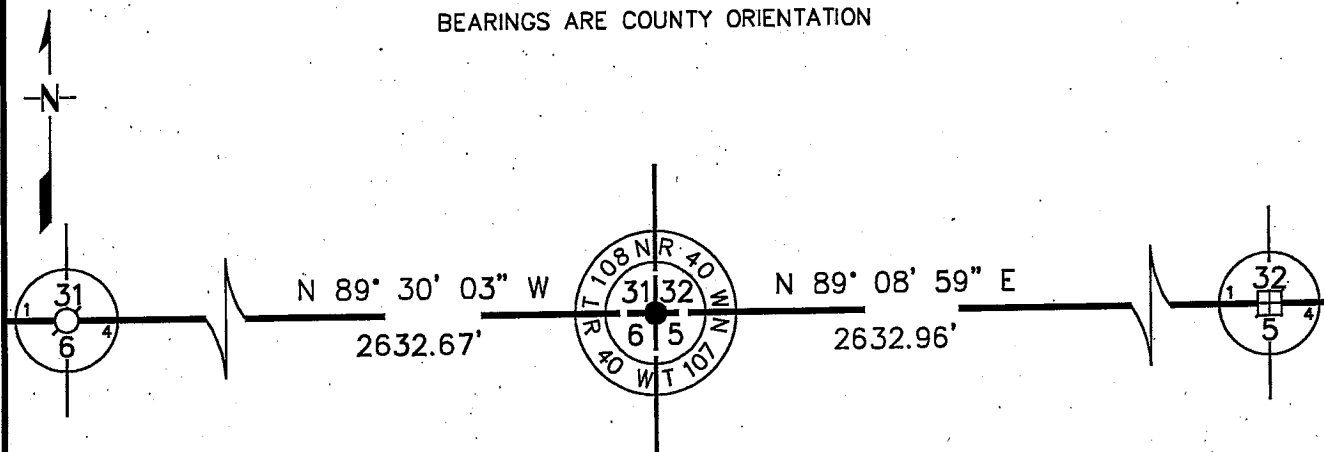
CERTIFICATE OF LOCATION OF GOVERNMENT CORNER

NORTHEAST Corner of Section 6, Township 107 N, Range 40 W
5th Principal Meridian, State of Minnesota, County of MURRAY

At the corner location shown on the sketch:

- On 11/15/2007 found a SOLID IRON, UP 1', 3 FEET UNDER WATER
DATE
- left monument as found, lowered monument, removed monument (explain)
- On _____ Placed a _____
DATE

BEARINGS ARE COUNTY ORIENTATION



CORNER LOCATION IS IN WEBSTER SLOUGH

SECTION CORNER

MURRAY COUNTY
 COORDINATE SYSTEM
 NAD 1983 1996 ADJ.
 N = 195125.800
 E = 521826.677

Statement of evidence for this corner location is on back of this page.

11/3/2008
SPK00220.00.00.01

I certify that this document was researched and prepared by me or under my direct supervision.

SIGNATURE Renee W. Shippert DATE 10/14/09 License Number 17003

Title: Land Surveyor Professional Engineer County Surveyor County Engineer

The DNR Division of Lands and Minerals contacted the following for survey information:

Minnesota Secretary of State's Office
Murray County Recorder's Office
Murray County Highway Engineer's Office
Bueltel-Moseng Land Surveying of Marshall
Zieske Land Surveying Inc. of Windom
Madsen Land Surveying Inc. of Fairmont
Pellinen Land Surveying of Hutchinson

1861 U.S. General Land Office notes, obtained from the Secretary of State's Office, show the corner in a marsh. A wood post was set for a witness corner to the section corner 3.00 chains (198.00 feet) West with the following bearing trees marked:

15' W. Elm, South $3\frac{1}{2}^{\circ}$ East, 63 links (41.58 feet)
15' W. Elm, North $4\frac{1}{2}^{\circ}$ West, 14 links (9.24 feet)
15' W. Elm, North $1\frac{7}{8}^{\circ}$ East, 44 links (29.04 feet)
24' W. Oak, South $5\frac{1}{4}^{\circ}$ West, 80 links (52.80 feet)

The corner is also shown:

38.40 chains (2534.40 feet) from the east quarter corner of Section 6
78.92 chains (5208.72 feet) from the northwest corner of Section 6
40.00 chains (2640.00 feet) from the north quarter corner of Section 5

1890 September, a plat of survey in the Southwest Quarter of Section 32, by S.P. McIntyre, County Surveyor, obtained from the County Recorder's Office, shows the section corner, but does not indicate what kind of monument was found or set. The corner is shown:

40.00 chains (2640.00 feet) from the north quarter corner of Section 5

No Surveyor's Record Book A, pages 36 and 37, obtained from the County Recorder's
Date Office, contain a survey in the Southwest Quarter of Section 32, which show the same information that the 1890 plat of survey by S.P. McIntyre shows.

1913 October, Surveyor's Record Book A, page 235, obtained from the County Recorder's Office, contains a survey of Section 5 by J.H. Woolstencroft. Survey states that the corner location is in a lake and no distances are shown to it.

1913 October, Surveyor's Record Book, obtained from the County Highway Engineer's Office, contains a survey of Section 5 by J.H. Woolstencroft. Survey states that the corner location is in a lake and no distances are shown to it.

No Surveyor's Record Book, obtained from the County Highway Engineer's Office,
Date contains a survey in the Southwest Quarter of Section 32, which shows the section corner, but does not indicate what kind of monument was found or set. The corner is shown:

40.00 chains (2640.00 feet) from the north quarter corner of Section 5

Northeast Corner of Section 6, Township 107 North, Range 40 West, Page 2 of 5

No Surveyor's Record Book, obtained from the County Highway Engineer's Office, Date contains a survey in the Government Lots 3 and 4 of Section 6, which shows the witness corner 3.00 chains west of the section corner. A description of what kind of monument was found or set at the witness corner and the section corner is not given.

The following is noted:

"timber land on Lots 3 and 4 divided into lots as per plat to be filed in the Register of Deeds Office stake at corners and lines blazed"

1927 June, a plat of Subdivision of Gov. Lot No. 1 of Sec. 31, Twp. 108, Range 40, by J.W. Woolstencroft, County Surveyor, obtained from the County Recorder's Office states that a stone monument was placed at the section corner. No information is given about the witness corner.

1936 A Survey Map by the National Park Service that shows Sections 5 and 6, T107N, R40W, Sections 1 and 2, T107N, R41W, and Sections 35 and 36, T108N, R41W, in the possession of the DNR Division of Lands and Minerals, shows that a base line was measured as follows:

from a brass plug at the intersection of a north-south concrete pavement road and an east-west gravel road in the vicinity of the northwest corner of Section 2, Township 107 North, Range 41 West to the area of the northeast corner of Section 5, Township 107 North, Range 40 West

A spike and lath were set in the area of the corner and they are shown to be:

- a) on the base line
- b) in a dry pond
- c) east of a north-south fence that is near the east line of Section 6 (a distance to the fence is not given)
- d) 5265.5 feet from the northwest corner of Section 6
- e) 5268.82 feet from the area of the northeast corner of Section 5
- f) 2650.70 feet from a fence line south in the area of the north quarter corner of Section 5
- g) 2525.0 feet from the east quarter corner of Section 6

Computations using stationing reveal the spike and lath are:

- a) 5292.60 feet from the northwest corner of Section 6
- b) 5241.72 feet from the area of the northeast corner of Section 5
- c) 2623.60 feet from a fence line south in the area of the north quarter corner of Section 5

The map has conflicting distances to section and quarter corners and appears that it's a preliminary survey because no boundary work is shown on it.

Northeast Corner of Section 6, Township 107 North, Range 40 West, Page 3 of 5

1966 DNR Bureau of Engineering contracted N.C. Hoium and Associates Inc. of Coon
1967 Rapids, Minnesota, to survey property in Lake Shetek State Park. The DNR records of survey show that a traverse was run from the northwest corner of Section 1, Township 107 North, Range 41 West to the northeast corner of Section 5, Township 107 North, Range 40 West. The corner location is shown in a pond. A position for the section corner was computed as follows:

- a) on line between the northeast corner of Section 5 and the northwest corner of Section 6
- b) in line with a fence south that goes from the south side of the pond and continues south for 3889 feet

The computed position for the section corner was found to be:

- 5178.70 feet from the northwest corner of Section 6
- 5264.86 feet from the northeast corner of Section 5
- 2515.37 feet from the east quarter corner of Section 6

Computations from the survey information reveal that monuments were set on the north line of Sections 5 and 6 as follows:

- 3088 feet west of the northeast corner of Section 5
- 4826 feet west of the northeast corner of Section 5
- 5541 feet west of the northeast corner of Section 5
- 5860 feet west of the northeast corner of Section 5

No information is given about the witness corner and a monument was not set to mark the section corner.

1970 Field notes and a Property Map of a DNR Bureau of Engineering survey in the Southwest Quarter of Section 32 show the south line of the Southwest Quarter per the 1966/1967 Hoium survey.

1976 October 21, a page in a field notebook, obtained from Bueltel-Moseng Land Surveying, shows that a 2' diameter solid iron 4 feet long and up 6 inches was set in a dry lake bed for the corner.

No details are given on how the location of the corner was determined.

1978 The plat of DIAMOND ROW in the Southeast Quarter of Section 31 by Willard Pellinen, LS 9626, obtained from the County Recorder's Office, shows an iron monument at the corner, but does not indicate if it was found or set. Iron monuments are shown along the south line of Section 31 (north line of Section 6) at the following distances from the southeast corner of Section 31 (northeast corner of Section 6):

- 202.29 feet, 225.98 feet, 572.96 feet, 594.00 feet, 1484.96 feet,
- 1674.13 feet, 1699.81 feet

1981 December, a hand written statement with Willard Pellinen's business card copied thereon, from McCombs- Knutson Associates, Inc. in the possession of the DNR Division of Lands and Minerals, states the following about the corner:

set the southeast corner of Section 31 (northeast corner of Section 6) on a Government proration of the distance between the southwest corner of Section 31 and the south quarter corner of Section 32. We didn't set it on line-we used the south quarter corner of Section 32 and an old fence line about 650 feet east of the southeast corner of Section 31 and extended this line west to the southeast corner of Section 31. Using this for the southeast corner of Section 31, we also hit the fence along the south line of Government Lot 1 in Section 31

An attached sketch shows the corner:

- a) 2632.68 feet from the north quarter corner of Section 6
- b) 2632.68 feet from the north quarter corner of Section 5
- c) 5194.28 feet from the southwest corner of Section 31 (northwest corner of Section 6)

A description of what kind of monument, if any, was set at corner is not given.

1994 A Certificate of Survey for property in the Southwest Quarter of Section 32, obtained from Madsen Land Surveying Inc., shows a point on the north line of Section 5 a distance of 1570.80 feet west of the north quarter corner of Section 5. No information is given about the northwest corner of Section 5 (northeast corner of Section 6). The point on the north line of Section 5 is shown to be:

on the westerly extension of a line from the northeast corner of Section 5 thru the north quarter corner of Section 5

2007 November 15, the DNR Division of Lands and Minerals found a solid iron at corner, up about one foot and under about three feet of water. The iron was found to be:

- a) 213 feet east of the west edge of Park Lake
- b) 2632.96 feet from the north quarter corner of Section 5
- c) 5244.86 feet from the northeast corner of Section 5
- d) 2529.71 feet from the east quarter corner of Section 6
- e) 5194.29 feet from the northwest corner of Section 6
- f) 28.76 feet south of the westerly projection of a line from the northeast corner of Section 5 thru the north quarter corner of Section 5
- g) 16.8 feet east of the northerly projection of a line from the east quarter corner of Section 6 thru a north-south fence located 1230 feet southerly of the section corner
- h) 225.72 feet easterly of a found capped iron pipe marking a lot corner in the plat of DIAMOND ROW
- i) 572.88 feet easterly of a found iron pipe marking a point on the south line of DIAMOND ROW

Northeast Corner of Section 6, Township 107 North, Range 40 West, Page 5 of 5

A field search was conducted for the GLO bearing trees to the witness corner but no evidence of them were found.

A field search for the stone set in 1927 was NOT conducted because the Lake has water in it, a search for the record stone needs to be made when the Lake is dry.

Analysis of the above information led the DNR Division of Lands and Minerals to conclude that the found iron, which was set in 1976 and agrees with the 1981 survey measurements, marks the practical location of the corner.

The location of the corner per the 1966/1967 survey was not used because it should have been computed using a stone, which marks the north quarter corner of Section 5, and the fences lines east and west of the area of the northeast corner of Section 6.